

Fastener



The essentials in **RED** and **BLACK** : Products available on stock
References in **GREEN** : Products on request.



Steel wire hangers

Dark + finish on request

Suspension rope



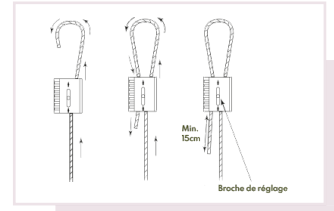
Cable reel



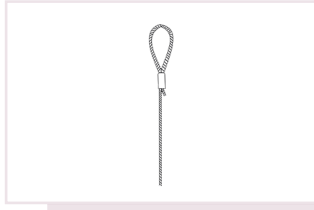
OBAR attachment



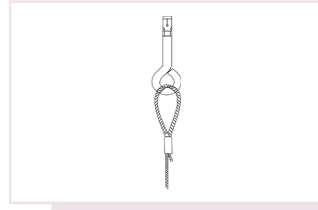
OBAR assembling



Loop*



Concrete loop*



Strut lock - SLM



Strut lock - Quick assembly on channel by suspension



	Pack. P	Load da/N	Kg /P	EZ
OBAR2 attachment	10	50	0.02	OBAR2
Cable reel Ø2 x100 ML	1	50	1.80	OBBC100
OBAR3 attachment	10	120	0.05	OBAR3
Cable reel Ø3 x100 ML	1	120	3.80	OBBD150
Suspension rope 2 x 460 mm	10	50	0.05	OBFS460
SLM- M8 loop -3M	10	45	0.09	SLM8EB3M*
SLM- M8 loop -5M		45	0.14	SLM8EB5M*
SLM- M8 concrete loop -5M		45	0.13	SLM8BE5M*
SLM- M10 concrete loop -5M		90	0.16	SLM10EB5M*
SLM - M8 strut lock	10	45	0.04	SLM8
SLM - M10 strut lock		90	0.06	SLM10

Ask for the complete brochure for steel wire hangers.

* Supplied with 1 strut lock, 1 suspension rope and OBAR2 attachment.

Brass ankles



	Pack. P	Dim.	Kg/%	Brass
CL6 - M6 brass ankles - %	200	6X28	0.47	L623
CL8 - M8 brass ankles - %	100	8X30	0.79	L828

Expansion anchors



	Pack. P	Dim.	Kg/%	EZ	SS304L
GAE M8	100	8X60	2.78	G30855	G130855
GAE M10		10X70	2.32	G31065	G131065

Fastener and Accessories

TRCC Bolts

	Pack. P	Kg/%	EZ	Geomet	SS316L
6x12 TRCC bolt	100	0.83	960612	260612	660612
6x16 TRCC bolt		0.90	960616	260616	-
6X20 TRCC bolt		0.97	960620	260620	660620
6x30 TRCC bolt		1.12	960630	260630	-
8x15 TRCC bolt		2.12	960815	260815	-



TRL screws

	Pack. P	Kg/%	EZ	Geomet	SS316L
6x16 TRL screw	100	0.40	931616V	231616V	631616V
6x30 TRL screw		0.75	931630V	231630V	631630V



Threaded rods

Possibility to order the threaded rods in 2 ml or 3 ml.
It is necessary to add -2 or -3 at the end of part number. Ex : TF M6 in I316L of 3 ML = 630306-3

	Pack. P	Kg/ML	EZ	EZ HR*	SS316L
TF M6	1	0.17	930306	930306HR	630306
TF M8		0.23	930308	930308HR	630308
TF M10		0.50	930310	930310HR	630310

* EZ HR : High Resistance



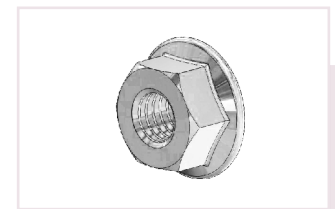
Threaded connectors

	Pack. P	Kg/%	EZ	SS316L
MA 6	200	1.42	930306M	630306M
MA 8	100	1.29	930308M	630308M



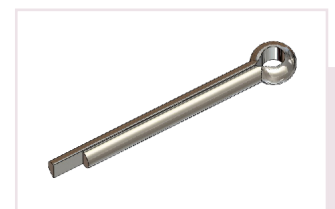
Flange nuts

	Pack. P	Kg/%	EZ	Geomet	SS316L
M6 FLANGE NUT	100	0.33	930106	230106	630106
M8 FLANGE NUT		0.65	930108	230108	630108
M10 FLANGE NUT		1.14	930110	230110	-

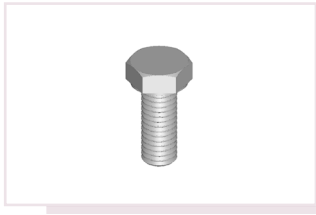


Cotter pin

	Pack. P	Kg/%	EZ
Cotter pin 8x80	100	4.00	980880

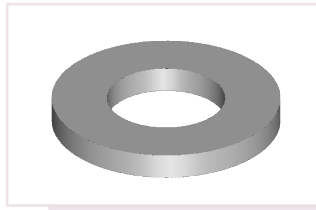


HM Screw



	Pack. P	Kg/%	EZ	Geomet	SS316L
8x20 HM screw	100	1.23	930820	230820	630820
8x40 HM screw		1.83	930840	230840	630840
10x25 HM screw		2.37	931025	231025	631025
10x40 HM screw		3.23	931040	231040	631040
12x25 HM screw		3.39	931225	231225	631225

Large flat washers



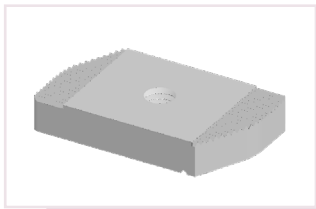
	Pack. P	Ext. diameter	Kg/%	EZ	Geomet	SS316L
Flat washer 6	100	Ø18	0.20	930206	230206	630206
Flat washer 8		Ø22	0.37	930208	230208	630208
Flat washer 10		Ø27	0.74	930210	230210	630210
Flat washer 12		Ø32	1.29	930212	230212	630212

Ø40 Extra large flat washers - Th. 3mm



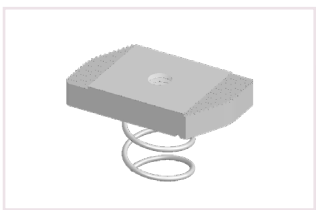
	Pack. P	Ext. diameter	Kg/%	EZ
Extra large flat washer 8	100	Ø40	2.57	930208E
Extra large flat washer 10			2.80	930210E

Channel nuts



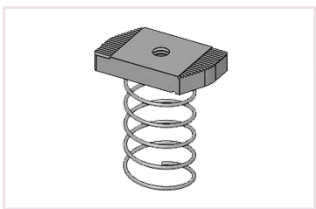
	Pack. P	Kg/%	EZ	Geomet	SS316L
M6 channel nut	100	2.70	930406	230406	630406
M8 channel nut		2.60	930408	230408	630408
M10 channel nut		3.30	930410	230410	630410
M12 channel nut		3.80	930412	230412	630412

Channel nuts - short spring for 41x21 channel



	Pack. P	Kg/%	EZ
M6 channel nut PR	100	2.40	930406PR
M8 channel nut PR		2.90	930408PR

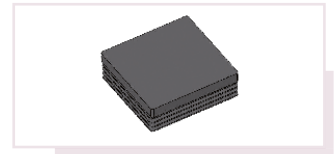
Channel nuts - long spring for 41x41 channel



	Pack. P	Kg/%	EZ	Geomet
M6 channel nut GR	100	2.80	930406GR	-
M8 channel nut GR		2.70	930408GR	-
M10 channel nut GR		3.50	930410GR	230410GR
M12 channel nut GR		4.50	930412GR	-

End caps

	Pack. P	Kg/%	Plastic
2l black end cap	10	0.40	994121
4l black end cap		0.70	994141



BCPA & BPPA plastic end cap

Allows to secure sharp ends of channels.
BCPA cap is compatible with RPA channels, CPA and CCA brackets.
BPPA cap is compatible with PPA ceiling bracket.

BCPA plastic end cap



BPPA plastic end cap



	Pack. P	Kg/%	Plastic
BCPA	10	0.01	958000
BPPA		0.01	959000

Cable protection

5 ml ring of cable protection

	Pack. P	Kg/%	Plastic
Reinforced ring for sheet metal flanges	1	0.56	950004



Sprays

	Pack. P	Sprays
Galva spray	1	940000
Color spray	6	94 xxxx *

To choose the colour of the spray: *part number 94 + RAL (p.93). Put : M (Mat) or B (Glossy) at the end

→ Ex: Ral 9010 Réf : 949010M

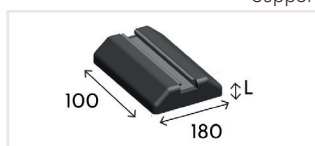


Rooftop supports

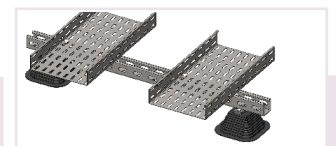
Material : black vulcanized rubber, resistant to UV.
* Support 250-400 : recycled rubber.
Provided without screws and bolts.

	Pack. P	Height. MM	Width. MM	Length. MM	Rubber
Support 140	2	80	140	140	ST140
Support 250		100	180	250	ST250
Support 400		100	180	400	ST400

Support 250 - 400 *



Support 140



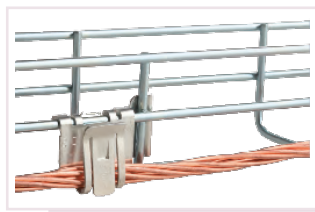
Wire cable tray earth bonding

OB Fix



According to NFC 15-100 standard.
OB Fix is a clip for 16 to 35 sqmm diameter earth cable.

Assembling

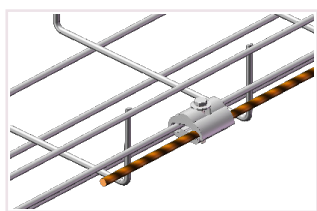
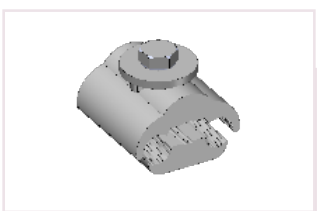


	Pack. P	Kg/P	Tin-plated copper steel
OB Fix	10	0.02	700008

Wire mesh earth clamp

To tighten the bare copper along the wire cable tray for 16 -35 sqmm wire.

Assembling

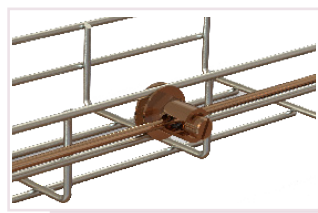
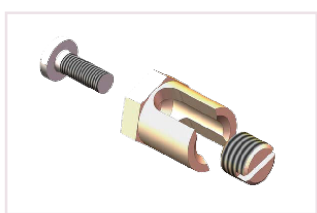


	Pack. P	Kg/P	Aluminium
Wire mesh earth clamp 35 sqmm	10	0.03	700004

Wire earth terminal kit

Wire earth terminal kit including 1 brass earth terminal and one 6x16 TRL brass screw.
Compatible earth cables with a diameter of 25 to 60 sqmm.
Add 2 washer for 1 kit.
Other dimensions on request.

Example of assembling

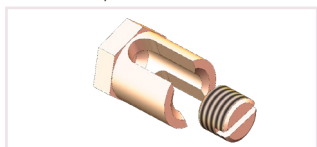


	Pack. P	Kg/P	Brass
Wire earth terminal kit 25 sqmm	10	0.03	701625
Wire earth terminal kit 35 sqmm		0.03	701635
Wire earth terminal kit 60 sqmm		0.05	701660
Bimetal washer Alu/Copper	10	0.50/%	700002

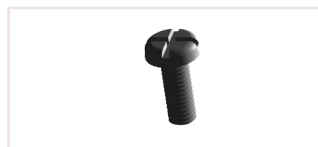
6x16 TRL is not provided with the 95 sqmm earth terminal.
Add 2 washers per earth terminal.
Other dimensions on request.

	Pack. P	Kg/P	Brass
95 sqmm earth terminal	10	0.70	700005
6x16 TRL screw		0.40	731616V
Bimetal washer Alu/Copper		0.50	700002

95 sqmm earth terminal



6x16 TRL screw



Bimetal washer Alu/Copper



Cable tray earth bonding

OB Tox

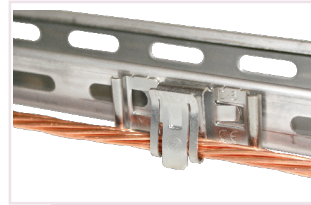


According to EN 61439-1 standard.
Compatible earth cables with a diameter of 16 to 35 sqmm.

Useful for cable tray thickness < 1.5 mm.

	Pack. P	Kg/P	Tin-plated copper steel
OB Tox	10	0.02	700010

Assembling



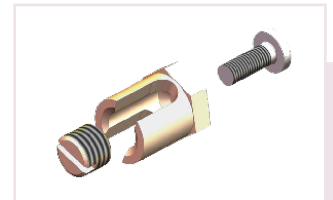
Cable tray earth terminal kit

Cable tray earth terminal kit including one 6x16 TRL brass screw.
Compatible earth cables with a diameter of 25 to 60 sqmm.

Add 1 washer for 1 kit.
Other dimensions on request.

	Pack. P	Kg/P	Brass
Cable tray earth terminal kit 25 sqmm	10	0.03	701025
Cable tray earth terminal kit 35 sqmm		0.04	701035
Cable tray earth terminal kit 60 sqmm		0.05	701060
Bimetal washer Alu/Copper	10	0.50/%	700002

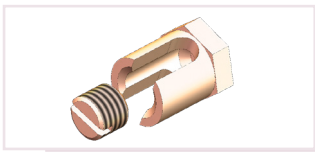
Assembling



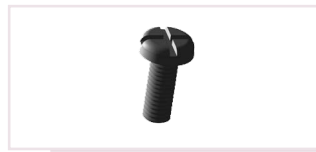
6x16 TRL is not provided with the 95 sqmm earth terminal.
Add 1 washers per earth terminal.
Other dimensions on request.

	Pack. P	Kg/P	Brass
95 sqmm earth terminal	10	0.70	700005
6x16 TRL screw		0.40	731616V
Bimetal washer Alu/Copper		0.50	700002

95 sqmm earth terminal



6x16 TRL screw



Bimetal washer Alu/ Copper



Earthing connection

Grounding braid

16 sqmm section.
Other sections on request

	Pack. P	Kg/P	Brass
Grounding braid	10	0.10	700009

Assembling

